



Close Coupled Toilet | 570AP / 570APS

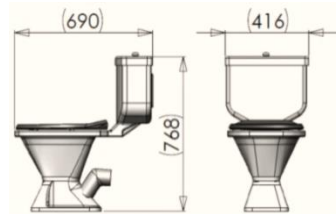
Description

The new Viking™ Close Coupled Toilet (patent no. P2015/06505) has set new industry standards with its all-in-one design and follows on the success of the Viking™ Basin, Urinal and Pan, providing exceptional finishes and attention to detail. Aimed at reducing manufacturing costs, labour costs, alleviating problems associated with leakage between the cistern and collecting bowl, this innovative toilet overcomes problems traditionally associated with installation of toilets.

Specification

CODE	WIDTH	LENGTH	HEIGHT	WEIGHT
570AP	416mm	690mm	768mm	7.2kg

- Paraplegic fittings available



Tooling Required

- 1) Spirit level
- 2) Power drill and correctly sized drill bits
- 3) Ratchet set and correctly sized sockets
- 4) Tape measure and marker
- 5) General plumbing hand tools
- 6) Marine silicone (colour - clear)
- 7) Fixation bolts no smaller than 8mm

Installation Guide

- 1) Ensure that the installation area on floor is clean and level without any items that may impact the level of the pan.
- 2) Using the pan collar as your centre point, align the pan with the collar using a tape measure, measure from the centre of the toilet seat holes to the wall in order to ensure equal distances.
- 3) Once these measurements have been determined mark the holes on the base of the pan with your marker leaving a clear indication on the floor.
- 4) Using your power drill, drill the indicated areas to the correct depth taking into account the base of the toilet pan.
- 5) Place a generous amount of silicone around the base of the pan along with the fixation bolts and place into drilled holes.
- 6) Secure the bolts without over tightening them, as this may cause damage to the base of the pan.
- 7) Once the unit is securely set clean all excess silicone with a damp cloth creating a smooth seal between floor and the pan.
- 8) Once all waste and water points have been connected test the joints by flushing the toilet and ensure a leak free installation.

Accessories needed:

- 1) 110mm Pan Connector

Available Flushing Options:

- 1) 017502 – Dutton CCF1 UNIV CC Bibi Front Flush Cistern Mechanism
- 2) 017508 – Dutton CCDF UNIV CC Dual Flush 2 Cistern Mechanism
- 3) 006824 – Parker Hibiscus Paraplegic F/F LL Mechanism





Viking Urinal | 508AP / 509AP

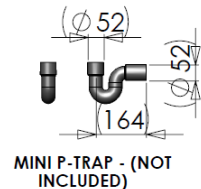
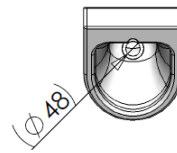
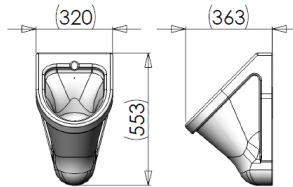
Description

When the Viking™ Urinal was designed, we focused our attention to ensure a professional finish and extreme durability. This urinal will fit into any public ablation facility and must be connected to the water supply. Installation is very easy with an advantage of lower maintenance cost.

Specification

CODE	WIDTH	LENGTH	HEIGHT	WEIGHT
508AP/509AP	320mm	363mm	553mm	3kg

- Waterless Urinal Waste also available



MINI P-TRAP - (NOT INCLUDED)

Tooling Required

- 1) Spirit level
- 2) Power drill and correctly sized drill bits
- 3) Ratchet set and correctly sized sockets
- 4) Tape measure and marker
- 5) General plumbing hand tools
- 6) Marine silicone (clear)
- 7) Fixation bolts no smaller than 8mm

Installation Guide

- 1) Ensure that the installation area on wall is clean and level without any items that may impact the level of the urinal
- 2) Using the existing waste and water points as your centre point, align the urinal onto these points and draw a faint outline around the urinal to ensure exact positioning.
- 3) Once these measurements have been determined mark the holes on the urinal with your marker leaving a clear indication on the wall
- 4) Using your power drill, drill the indicated areas to the correct depth taking into account the thickness of the urinal.
- 5) Place a generous amount of silicone around the edges of the urinal along with the fixation bolts and place into drilled holes.
- 6) While urinal is loosely secured align all your existing points before firmly securing the urinal to the wall, this will allow some leeway for tight connections.
- 7) Once all waste and water points are loosely connected secure the bolts without over tightening them causing damage to the urinal itself.
- 8) Once urinal is secured connect all existing waste and water points firmly to the unit.
- 9) Once all waste and water points have been connected test the joints by flushing the urinal and ensure a leak free installation on all waste and water connections.

Optional Extras:

- 1) 001304 – Vaal 8541Z000 Back Entry Lavatera Spreader & Tailpipe
001305 – Vaal 8542Z000 Top Entry Lavatera Spreader & Tailpipe
002288 – Flatback CP Urinal Spreader Only 8543Z000
- 2) Waterless Urinal Waste 40mm – Available from Atlas Plastics
- 3) 001574 – 40mm PVC Urinal Waste Fitting 85mm Shank
- 4) 000402 – Flexi “P” Mini Trap Plain 40x40





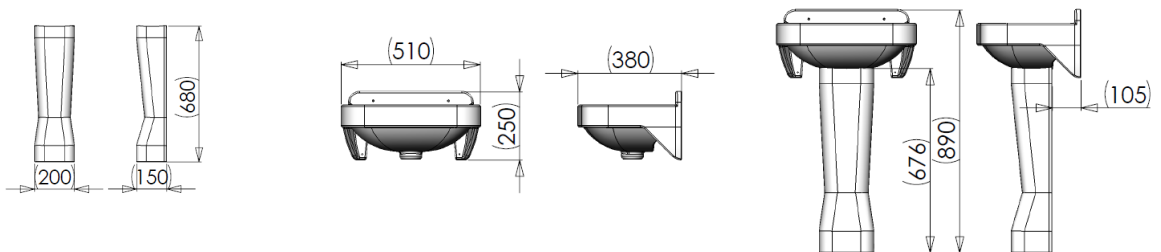
Hand Wash Basin | 377AP / 378AP

Description

Our Viking™ Hand Basin is vandal resistant, but with a professional look and finish. Easy installation and low maintenance makes it perfect for schools, hospitals, correctional facilities and other tough environments.

Specification

CODE	WIDTH	LENGTH	HEIGHT	WEIGHT
377AP/ 378AP	510mm	380mm	250mm	2.5kg



Tooling Required

- 1) Spirit level
- 2) Power drill and correctly sized drill bits
- 3) Ratchet set and correctly sized sockets
- 4) Tape measure and marker
- 5) General plumbing hand tools
- 6) Marine silicone (clear)

Installation Guide

- 1) Place the basin against the finished wall ensuring no obstacles are present which may cause the basin not to sit flush against the wall.
- 2) Mark the holes on the wall to drill your holes for the fixation bolts. Ensure that your holes are in a level line before drilling.
- 3) Using the correctly sized hole saw drill your holes for the pillar taps or mixer to be installed onto the unit
- 4) Once the holes have been drilled in the basin and the walls place a generous amount of silicone around the edges of the basin and place basin on the wall with the fixation bolts. NB DO NOT OVER TIGHTEN THE FIXATION BOLTS AS THIS WILL DAMAGE THE BASIN
- 5) Once basin is securely installed connect all waste and water piping and test installation for any leaks.

Installing the pedestal:

Should a pedestal be required, the following guide lines are to be followed:

- 1) Measure the height of the pedestal to below the basin cradle. Once this height has been established carry out steps 1 to 5 finishing off the pedestal by sliding it between the floor and basin. This can be finished off neatly with silicone below the basin and at the base of the pedestal itself. To ensure a steady pedestal, don't allow too much space between the basin and the pedestal.

Optional Extras:

- 1) Taps or mixer
- 2) Basin Pedestal (387AP/388AP)
- 3) 001574 – 40mm PVC Urinal Waste Fitting 85mm Shank
- 4) 000402 – Flexi “P” Mini Trap Plain 40x40





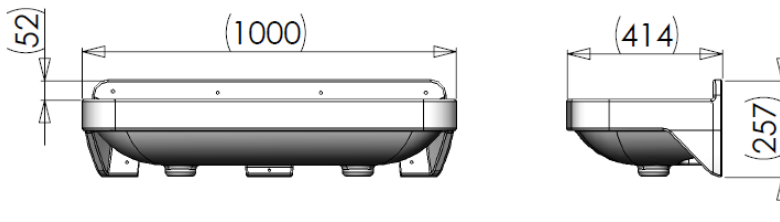
Double Basin | 412AP / 413AP

Description

Our Viking™ Double Basin is vandal resistant, but with a professional look and finish. Easy installation and low maintenance makes it perfect for schools, hospitals, correctional facilities and other tough environments.

Specification

CODE	WIDTH	LENGTH	HEIGHT	WEIGHT
412AP/ 413AP	1000mm	414mm	257mm	±6kg



Tooling Required

- 1) Spirit level
- 2) Power drill and correctly sized drill bits
- 3) Ratchet set and correctly sized sockets
- 4) Tape measure and marker
- 5) General plumbing hand tools
- 6) Marine silicone (clear)

Installation Guide

- 1) Place the basin against the finished wall ensuring no obstacles are present which may cause the basin not to sit flush against the wall.
- 2) Mark the holes on the wall to drill your holes for the fixation bolts. Ensure that your holes are in a level line before drilling.
- 3) Using the correctly sized hole saw drill your holes for the pillar taps or mixer to be installed onto the unit
- 4) Once the holes have been drilled in the basin and the walls place a generous amount of silicone around the edges of the basin and place basin on the wall with the fixation bolts. NB DO NOT OVER TIGHTEN THE FIXATION BOLTS AS THIS WILL DAMAGE THE BASIN
- 5) Once basin is securely installed connect all waste and water piping and test installation for any leaks.

Optional Extras:

- 1) Pillar Taps or mixer
- 2) 001574 – 40mm PVC Urinal Waste Fitting 85mm Shank
- 3) 000402 – Flexi “P” Mini Trap Plain 40x40





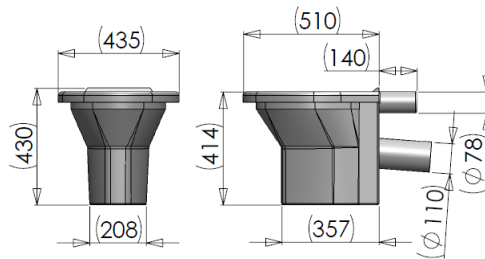
Viking WC Pan | 586AP / 587AP

Description

The Viking™ Toilet Pan was specifically designed to be used with a concealed cistern. This reduces the possibility of vandalism and makes it perfect for areas like public ablutions, schools, correction facilities and hospitals. This pan can also be used for paraplegic facilities. This Anti Ligature WC pan has a moulded-in seat which keeps a professional finish, but eliminates costs to replace the seat and flap due to general wear and tear.

Specification

CODE	WIDTH	LENGTH	HEIGHT	WEIGHT
586AP/ 587AP	435mm	510mm	430mm	±5kg



Tooling Required

- 1) Spirit level
- 2) Power drill and correctly sized drill bits
- 3) Ratchet set and correctly sized sockets
- 4) Tape measure and marker
- 5) General plumbing hand tools
- 6) Marine silicone (clear)
- 7) Fixation bolts no smaller than 8mm
- 8) Window putty for joints on cistern (Ask Mark)

Installation Guide

- 1) Ensure that installation area on floor is clean and level without any items that may impact the level of the pan
- 2) Using the pan collar as your centre point, align the pan with the collar ensuring equal distance from the holes for the seat to the wall with a tape measure to ensure that the pan will be plumb.
- 3) Once these measurements have been determined mark the holes on the base of the pan with your marker leaving a clear indication on the floor.
- 4) Using your power drill, drill the indicated areas to the correct depth taking into account the base of the toilet pan.
- 5) Place a generous amount of silicone around the base of along with the fixation bolts and place into drilled holes.
- 6) Secure the bolts without over tightening them causing damage to the base of the pan.
- 7) Once pan is securely set clean all excess silicone with a damp cloth creating a smooth seal between floor and pan.
- 8) Once all waste points have been connected test the joints by flushing the toilets and ensure a leak free installation.

Optional Extras:

- 1) 001293 – Cobra FJ2-100CP Toilet Flush Valve Back Entry 20mm
- 2) 001294 – Cobra FJ4-203BC Flush Valve Toilet Concealed Complete
- 3) 003615 – Cobra FJ4-203PR Toilet Flush Valve (Prison type)
- 4) Geberit 110.175.00.1 Alpha Kombifix Concealed Cistern





45lt Wash Trough | 376AP

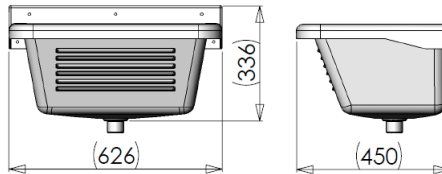
Description

The ideal outdoor wash trough for all those messy items that you do not want to clean inside your home.

Specification

CODE	WIDTH	LENGTH	HEIGHT	WEIGHT
376AP	626mm	450mm	336mm	±3.5kg

- Different colours available on request



Tooling Required

- 1) Spirit level
- 2) Power drill and correctly sized drill bits
- 3) Ratchet set and correctly sized sockets
- 4) Tape measure and marker
- 5) General plumbing hand tools
- 6) Fixation bolts no smaller than 8mm

Installation Guide

- 1) Ensure that installation area on wall is clean and level without any items that may impact the spacing between the wash trough and the wall
- 2) Using the bib tap as your centre point, align waste with the tap as your centre line (should there be only cold water)
- 3) Once these measurements have been determined draw a level line and mark the holes as indicated on the wash trough
- 4) Using your power drill, drill the indicated areas to the correct depth taking into account the thickness of the wash trough and adjust accordingly
- 5) Once the holes have been drilled secure the wash trough to the wall using the fixation bolts provided ensuring you do not over tighten them
- 6) Install the waste and connect the wash trough to the existing waste system.
- 7) Fill up wash trough to the maximum to ensure no leaks on the waste as well as testing the fixation bolts are securely fastened.

Important Information:

No rawl-bolts, fisher plugs or fixation bolts will ever secure to a hollow block wall correctly. Should the structure have hollow blocks please ensure that threaded rod is installed with Kwik-set cement or a strong epoxy allowing the mixture to dry before installing the unit. The best option is threaded rod drilled through the wall with washers to take the weight. Revert back to Kwik-set cement or epoxy if tiles are behind the exterior wall and drilling right through the wall is not an option due to potential property damage. Please check epoxy drying times as well as Kwik-set cement and adhere to the timelines before carrying out the installation.

Optional Extras:

- 1) Waste and trap
- 2) Taps or mixer